



Dunedin Boat Club
(Organizing Authority)

2021 GULF SERIES

(Includes Winter Regatta and Fall Regatta)

SAILING INSTRUCTIONS (“SI”)

1. RULES

- 1.1. The races will be governed by the rules as described in The Racing Rules of Sailing (RRS).
- 1.2. The races will be in accordance with the West Florida PHRF Inc. Class Rules.

2. NOTICES TO COMPETITORS

- 2.1. Notices to competitors will be posted on the “Official Notice Board” located at the Yacht Scoring website. You may access the link to that site at Dunedin Boat Club (“DBC”) website:
<https://dunedinboatclub.org/racing-2>.
- 2.2. Race Committee will make every effort to email and or text competitors cell phones that a Notice to Competitors has been posted.

3. CHANGES TO SAILING INSTRUCTIONS

- 3.1. Any changes to these Sailing Instructions will be posted before 0800 hrs. on the day it will take effect, except that any change to the schedule of races will be posted by 1900 hrs. on the day before it will take effect. Said changes will be posted on the “Official Notice Board” located at the Yacht Scoring website.

4. SCHEDULE OF RACES

DBC Gulf Series (Winter Regatta) January 23, 2021 February 20, 2021 April 17, 2021	DBC Gulf Series (Fall Regatta) September 11, 2021 October 23, 2021 November 20, 2021
--	--

5. CLASS FLAGS

- 5.1. The class flag for spinnaker fleet shall be nautical flag number 1.
- 5.2. The class flag for cruisers shall be nautical flag number 3.
- 5.3. Additional Flags may be added if other classes register.

6. RACING AREA

- 6.1. The racing area will be approximately ½ mile south of the Clearwater Pass entrance mark #1 in the Gulf of Mexico. SEE APPENDIX A

7. COURSES

- 7.1. Course MARKS will be displayed on a white board mounted on the stern of Signal vessel using the mark placement LETTERS as noted on Appendix A.
- 7.2. If there is no Signal vessel on station; start/finish may be between 2 orange buoys.
- 7.3. Rule 90.2c applies: changes to the course can be made on the water via communications on VHF channel 72.



Dunedin Boat Club

(Organizing Authority)

8. MARKS

- 8.1. The MARKS of the course may be a combination of orange balls and yellow cannisters.
- 8.2. Start, finish – Signal vessel orange flag on port stern of Signal
- 8.3. Finish pin – orange buoy
- 8.4. Original Marks – yellow cannisters

9. THE START

- 9.1. Races will be started by using rule 26 with the “alert” made one minute before the sequence begins at 11:55 hrs.
- 9.2. During a starting sequence, boats whose warning signal has not been made shall stay clear of those in the starting sequence.
- 9.3. A boat shall not start later than 4 minutes after her starting signal. Such boat will be scored DNS without a hearing. This changes rules A4 and A5.

10. THE FINISH

- 10.1 The finish line will be between a staff displaying an orange flag on the port side of Signal and the course side of a finishing mark (orange buoy)

11. PROTESTS AND REQUEST FOR REDRESS

- 11.1 It is fully hoped that all protest situations will be resolved on the race course.
- 11.2 Anyone planning to protest or request redress must notify the Race Committee by VHF Channel 72 marine radio **immediately** after they have crossed the finish line.
- 11.3 Protest forms are on the bulletin notice board at the Dunedin Boat Clubhouse. They are also available at the Yacht Scoring web site. They must be filled out and presented to the Race Chairperson in person or by email attachment by 2000 hrs. the day of the race.
- 11.4 Notice will be called and emailed to competitors by the Race Committee Chairperson within 24 hours informing them of the time and place for a hearing.

12. SCORING

- 12.1 Scoring will be managed by Yacht Scoring on line.
- 12.2 The low point scoring will be used
- 12.3 All races will count
- 12.4 There will be one race per race date.
- 12.5 There needs to be 3 registered boats at the start to constitute a race
- 12.6 Each of the two, 3-race date regattas, will be scored as an independent regatta and awards will be presented for the winners of the Winter Regatta and the Fall Regatta.
- 12.7 A competitor boat who gives up a race to serve as Signal vessel for the Race Committee will be given points equal to 1st place for that race.

13. SAFETY AND EQUIPMENT

- 13.1 The Gulf Races are under the West Florida PHRF Racing Class Rules as Category 4 races.
<http://wfphrf.org/wordpress/wp-content/uploads/2015/08/WFPHRFClassRules083015.pdf>
- 13.2 All vessels shall have an enclosed cabin and lifelines

14. RADIO COMMUNICATION



Dunedin Boat Club

(Organizing Authority)

14.1 The Race Committee will communicate with competitors on channel 72.

14.2 A boat that retires from a race shall notify the race committee on channel 72 when leaving the racing area.

15. PRIZES:

15.1 Awards are given for first, second & third place per qualified class within that respective Winter Regatta or Fall Regatta.

15.2 The Dunedin Boat Club's **BOAT OF THE YEAR ("BOTY")** goes to the DBC member competitor with the lowest accumulated score in the Gulf, 6-race Series and will be awarded at the Annual DBC Change of Watch ceremony.

15.3 The Race Committee may present any additional awards at their discretion

16. DISCLAIMER OF LIABILITY

16.1 Competitors participate entirely at their own risk. See rule 3 "decision to race".

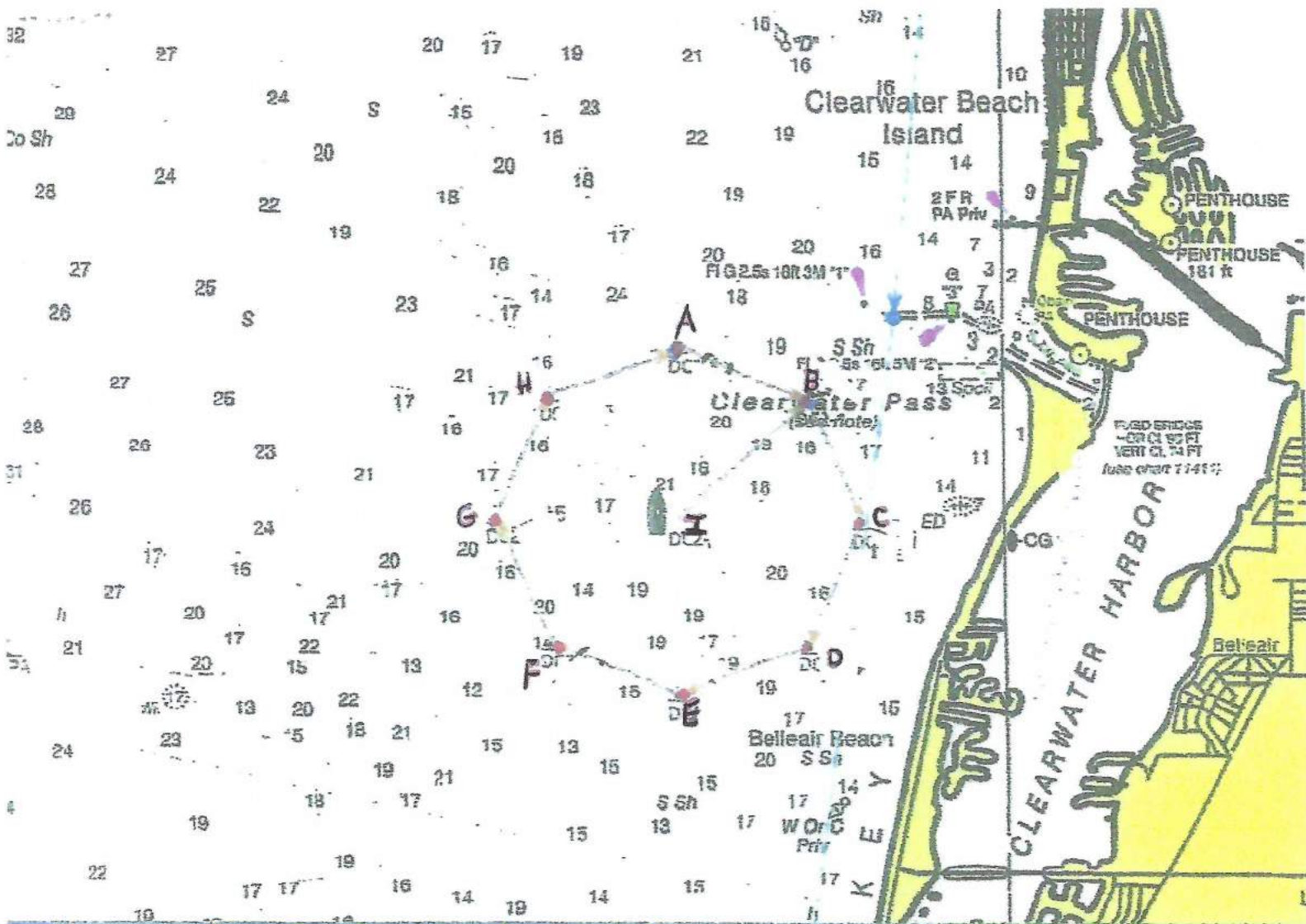
16.2 The organizing authority will not accept any liability for material damage, personal injury or death sustained in conjunction with or prior to, during or after the regatta.

16.3 Competitors will be expected to complete the waiver instructions within their Yacht Scoring registration.

17. INSURANCE

17.1 Each participating boat is required to hold adequate insurance including third party insurance, and it is the owner's sole responsibility to ensure insurance is in place and adequate to participate in these events.

17.2 Competitors will be expected to complete the insurance acknowledgement within their Yacht Scoring registration



2021 Gulf Series - SI Appendix A

Mark #	Lat	Long
A	27 58.0 N	082 52.0 W
B	27 57.7 N	082 51.2 W
C	27 57.0 N	082 50.9 W
D	27 56.3 N	082 51.2 W
E	27 56.0 N	082 52.0 W
F	27 56.3 N	082 52.8 W
G	27 57.0 N	082 53.1 W
H	27 57.7 N	082 52.8 W
I	27 57.0 N	082 52.0 W

- Courses will be signaled by mark letters and in the order in which they are to be rounded.
- Leave all marks to port.
- Mark coordinates are approximate and are the same ones used for the 2020 Dunedin Cup.
- The Pin end of the starting line may be used as a mark of the course.
- If a Signal Vessel is on station, the pin end of the Start/Finish line shall be passed to port just as all other marks.

- SHOULD there be NO SIGNAL vessel, a gate comprised of two orange buoys, one at the pin end and one in place of the Signal vessel shall be used. In that case, one can go through the gate, between the two buoys, and round either end to head for the next mark. When going through the finish, they will announce their GPS finish time on channel 72.